

35 Hyde Park Street, Gateshead, NE8 4QB

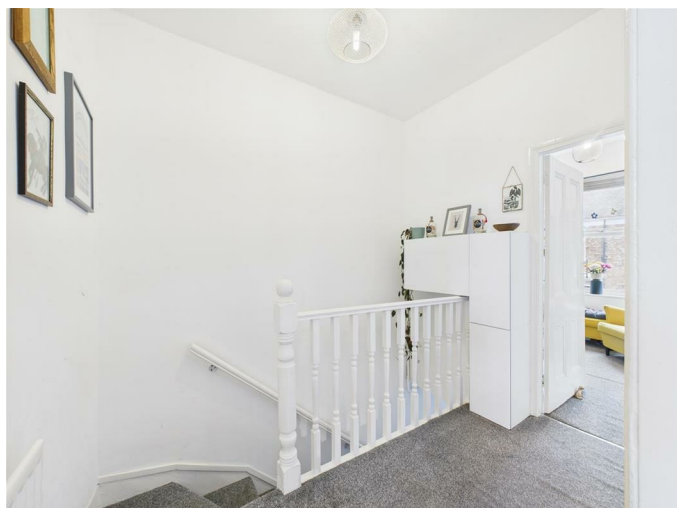
£89,950

Nestled in the heart of Gateshead on Hyde Park Street, this stunning first-floor flat boasts a unique and inviting layout that is sure to impress. As you enter, you are greeted by a charming staircase leading to the first-floor landing, which provides access to both bedrooms and the spacious lounge/ kitchen area.

The flat features two well-proportioned bedrooms, perfect for a small family or professionals seeking a comfortable living space. The central open-plan kitchen and lounge area create a warm and welcoming atmosphere, ideal for entertaining guests or enjoying quiet evenings at home. The kitchen is designed with modern living in mind, offering both style and functionality. In addition to the main living areas, this property includes a separate utility room, providing extra convenience for your day-to-day needs. The stylish bathroom is thoughtfully designed, ensuring a relaxing space to unwind after a long day. To the rear there is a private rear yard, offering a delightful outdoor space. This property combines modern living with a touch of charm, making it a perfect choice for those looking to settle in a vibrant area of Gateshead. With its unusual layout and thoughtful design, this flat is a rare find and presents an excellent opportunity for anyone seeking a comfortable and stylish home. Don't miss the chance to make this lovely property your own.

ENTRANCE LOBBY

FIRST FLOOR LANDING



LOUNGE / KITCHEN / DINING ROOM

15'0" x 12'9" (4.58 x 3.89)



BEDROOM ONE

14'6" x 12'9" max measurement (4.44 x 3.89 max measurement)



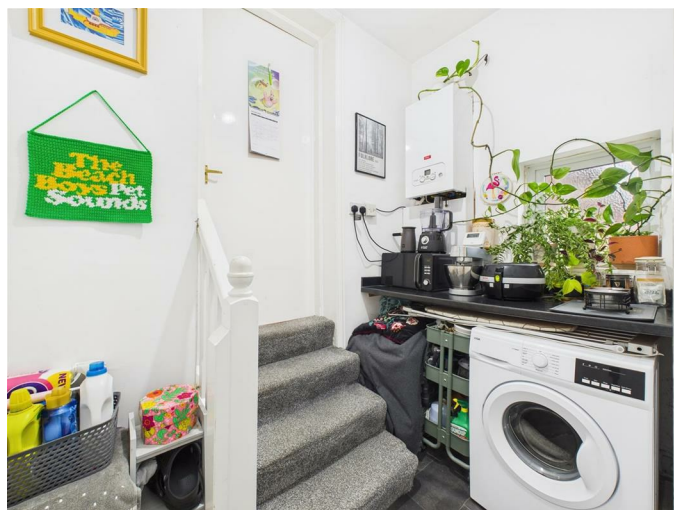
BEDROOM TWO

9'2" x 7'3" (2.80 x 2.23)



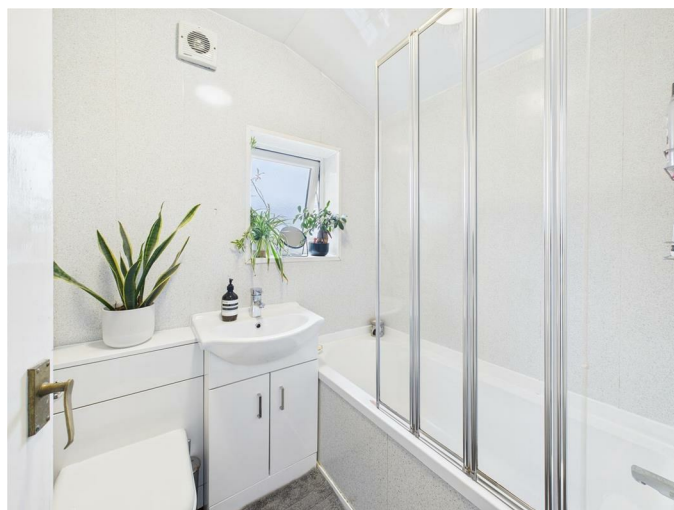
UTILITY

7'11" x 4'10" (2.42 x 1.49)



BATHROOM/W.C.

5'10" x 5'6" (1.79 x 1.69)



EXTERNAL

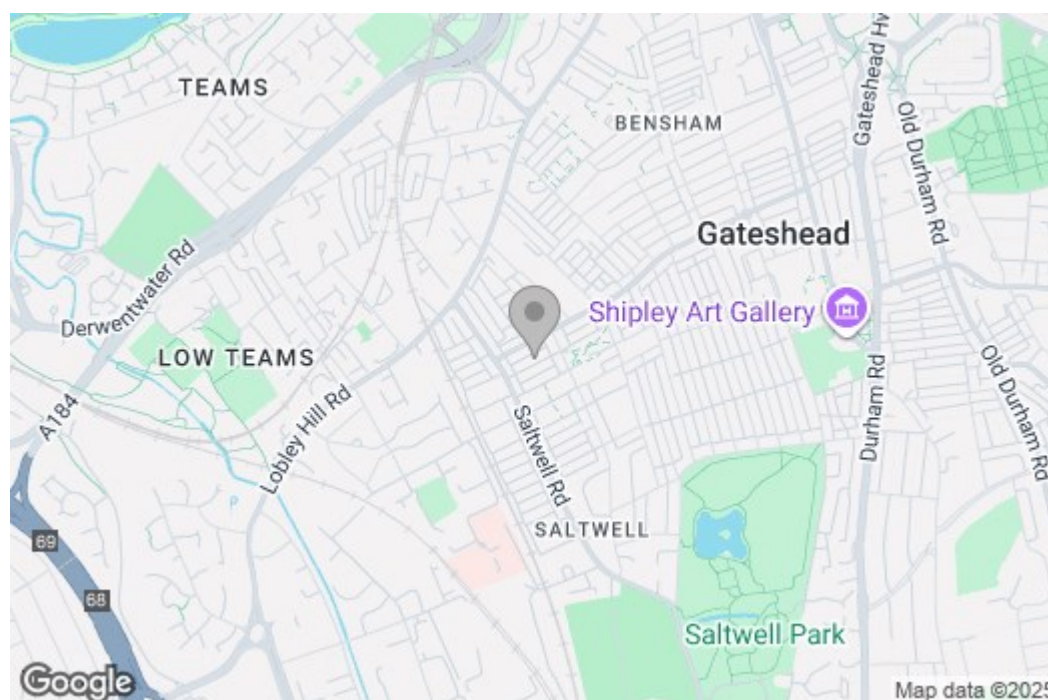
Property disclaimer

IMPORTANT NOTE TO PURCHASERS: We endeavour to make our sales particulars accurate and reliable, however, they do not constitute or form part of an offer or any contract and none is to be relied upon as statements of representation or fact. The services, systems and appliances listed in this specification have not been tested by us and no guarantee as to their operating ability or efficiency is given. All measurements have been taken as a guide to prospective buyers only, and are not precise. Floor plans where included are not to scale and accuracy is not guaranteed. If you require clarification or further information on any points, please contact us, especially if you are travelling some distance to view. Fixtures and fittings other than those mentioned are to be agreed with the seller. We cannot also confirm at this stage of marketing the tenure of this house.

Floor Plan



Area Map



These particulars, whilst believed to be accurate are set out as a general outline only for guidance and do not constitute any part of an offer or contract, purchaser should not rely on them as statements of representation of fact, but must satisfy themselves by inspection or otherwise as to their accuracy. No person in this firm's employment has the authority to make or give a representation or warranty in respect of the property.

Energy Efficiency Graph

