



7 Lamorbey Walk, Chester Le Street, DH3 2DL

Offers Over £250,000

Nestled in the desirable Lamorbey Walk, this stunning detached house offers a perfect blend of comfort and modern living. Ideally located, the property is conveniently close to local amenities and transport links, making it an excellent choice for families and professionals alike. Upon entering, you are greeted by a spacious hallway that leads into a delightful dining kitchen. This well-appointed space features integrated appliances, including an eye-level double oven, combination microwave, warming drawer, fridge/freezer, and dishwasher, making it a dream for any home cook. The ground floor also boasts a roomy w/c and a generous living room, which is enhanced by bi-folding doors that seamlessly connect the indoor space to the rear patio, perfect for entertaining or enjoying a quiet evening outdoors. The first floor landing offers built-in storage, leading to the main bedroom, which is equipped with fitted wardrobes and an en-suite shower room for added convenience. Two additional bedrooms provide ample space for family or guests, complemented by a stylish family bathroom. The rear garden is a true highlight, featuring a well-maintained lawn, a paved patio area, and a raised decked sun terrace, ideal for soaking up the sun or hosting gatherings. For those with vehicles, a detached garage and a double-length driveway ensure plenty of off-street parking. This beautiful family home is a must-see, and viewings are essential to fully appreciate the spacious accommodation and thoughtful design it offers. Don't miss the opportunity to make this wonderful property your own.

ENTRANCE HALLWAY

INNER HALLWAY

LIVING ROOM

16'4" x 11'3" (4.98m x 3.43m)



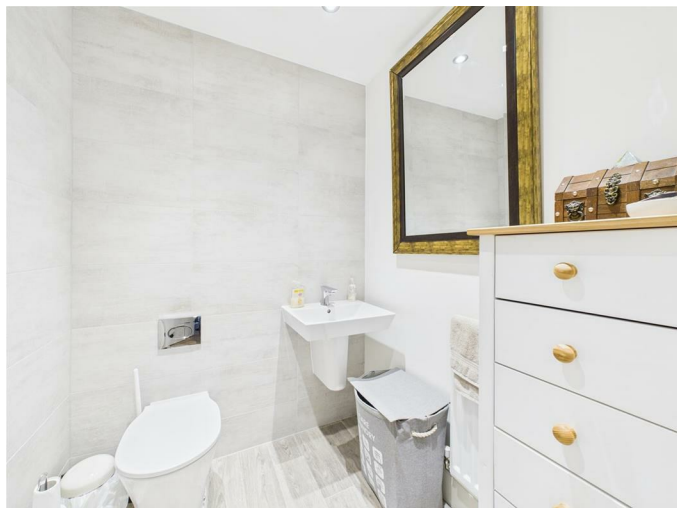
DINING KITCHEN

13'8" x 13'2" exc staircase (4.17m x 4.02m exc staircase)

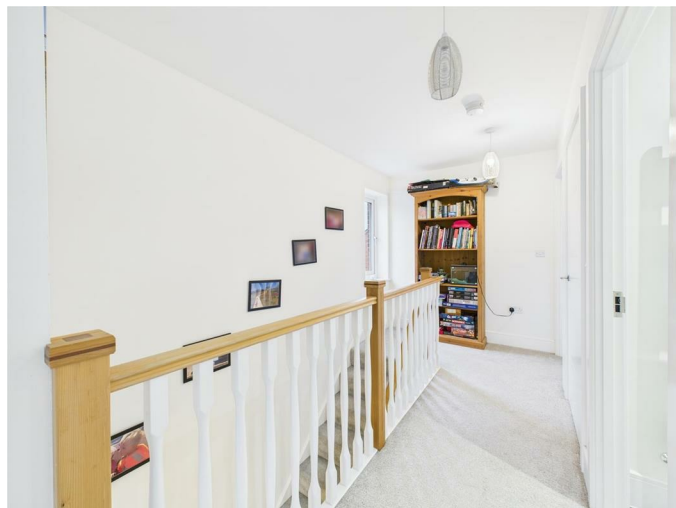


GROUND FLOOR W/C

6'1" x 5'2" (1.86m x 1.59m)

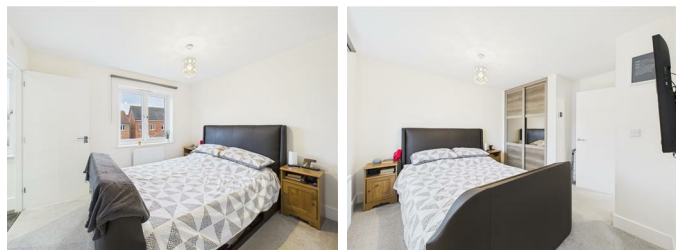


FIRST FLOOR LANDING



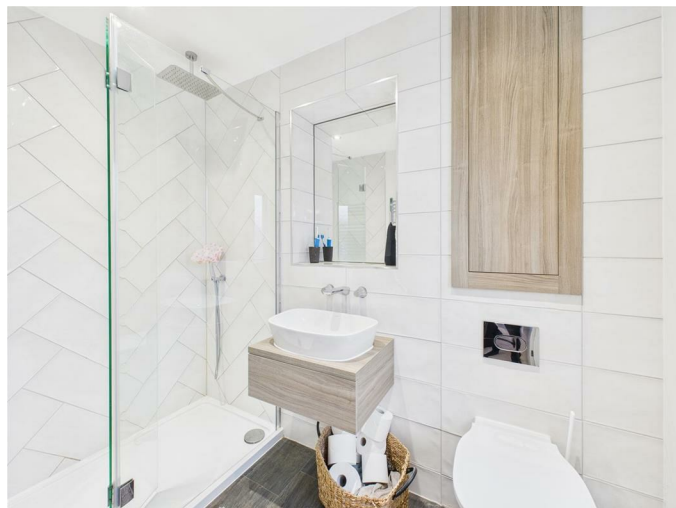
BEDROOM ONE

11'8" x 10'8" (3.58m x 3.27m)



EN-SUITE SHOWER ROOM

7'8" x 4'9" (2.36m x 1.46m)



BEDROOM TWO

11'1" x 8'7" (3.40m x 2.64m)

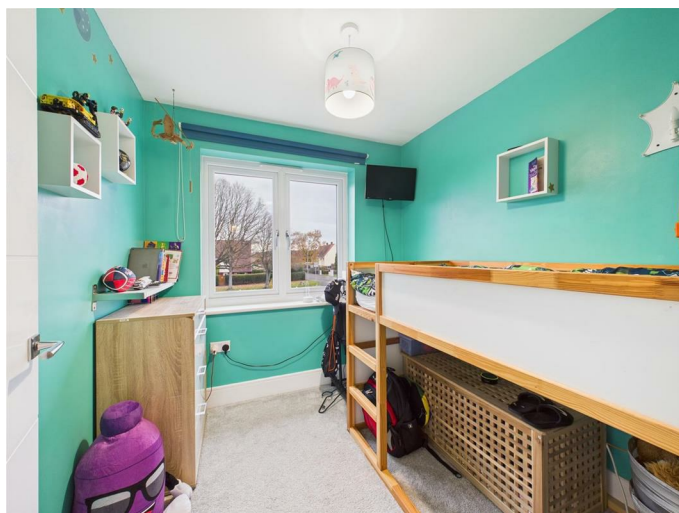


DETACHED GARAGE



BEDROOM THREE

9'3" x 7'4" (2.82m x 2.26m)

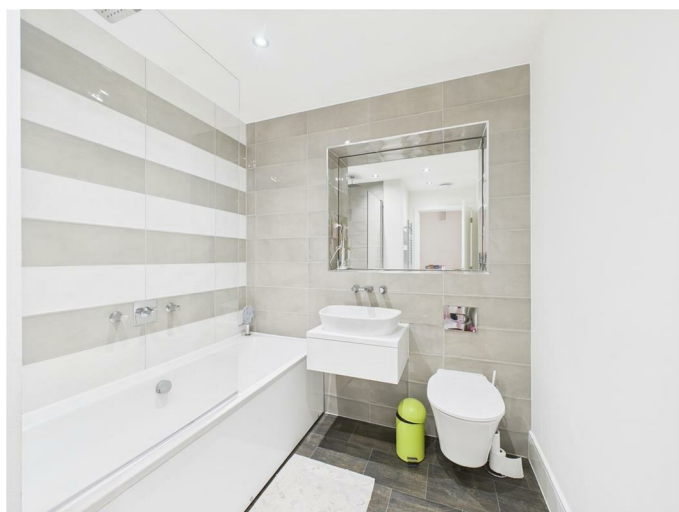


EXTERNAL



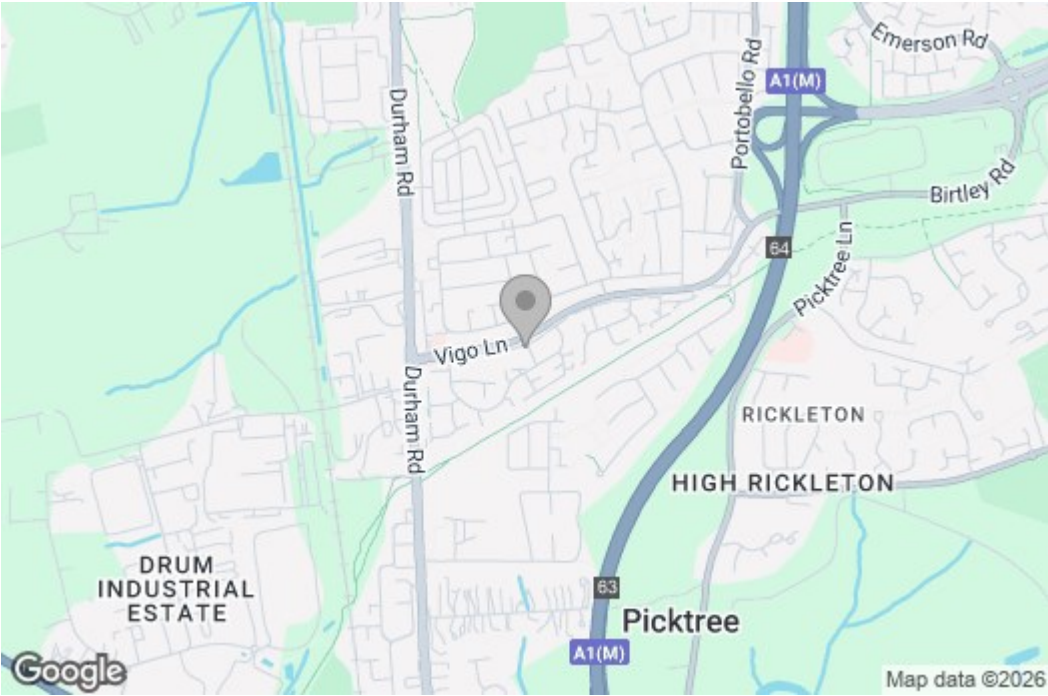
FAMILY BATHROOM

8'4" x 6'10" (2.56m x 2.09m)



Floor Plan

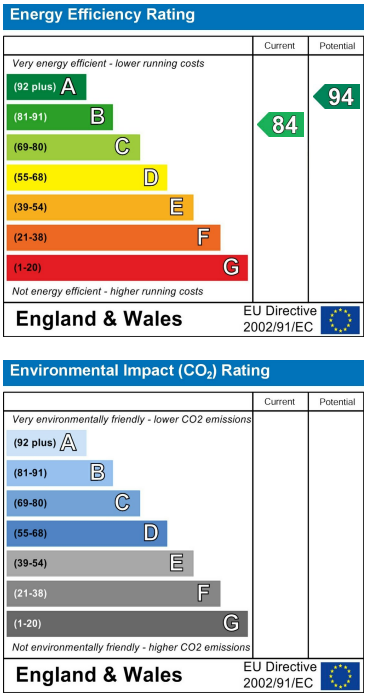
Area Map



These particulars, whilst believed to be accurate are set out as a general outline only for guidance and do not constitute any part of an offer or contract, purchaser should not rely on them as statements of representation of fact, but must satisfy themselves by inspection or otherwise as to their accuracy. No person in this firm's employment has the authority to make or give an representation or warranty in respect of the property.

429 Durham Road
Gateshead
NE9 5AN

Energy Efficiency Graph



0191 4874211
home@gordon-brown.co.uk
www.gordon-brown.co.uk