



78 Grisedale Gardens, Gateshead, NE9 6NP

Offers Over £150,000

Located in the sought-after area of Grisedale Gardens, this charming semi-detached house presents an excellent opportunity for families seeking a comfortable and inviting home. The property boasts a generous plot, providing ample outdoor space for both relaxation and play. Upon entering, you are welcomed by a spacious entrance hallway that leads to a bright and airy lounge, featuring windows that offer delightful views to both the front and rear of the property. This inviting space is perfect for family gatherings or quiet evenings in. The kitchen is well-equipped with an integrated oven, making it a practical area for culinary enthusiasts. The first floor comprises three well-proportioned bedrooms, each offering a peaceful retreat for rest and relaxation. The family bathroom is conveniently located, ensuring ease of access for all members of the household. The gardens, both at the front and rear, enhance the appeal of this home, providing a lovely setting for outdoor activities or simply enjoying the fresh air. The property has undergone thoughtful updating and refurbishment by the current vendor, ensuring it is ready for you to move in and make it your own. Viewings are highly recommended to fully appreciate the charm and potential of this ideal family home. With its desirable location and modern touches, this property is sure to attract interest from those looking to settle in a welcoming community.

ENTRANCE HALLWAY



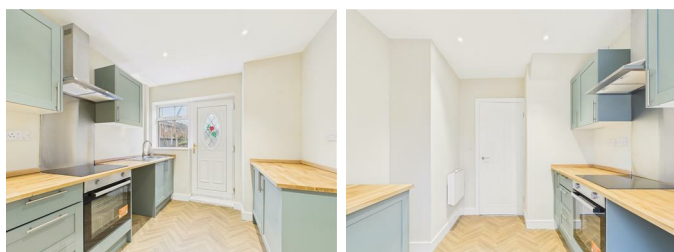
LIVING ROOM

19'1" x 10'1" (5.82m x 3.09m)



KITCHEN

11'3" x 8'5" (3.43m x 2.59m)



FIRST FLOOR LANDING

BEDROOM ONE

11'6" x 9'5" (3.52m x 2.88m)



BEDROOM TWO

9'11" x 8'5" (3.04m x 2.59m)



BEDROOM THREE

9'6" x 7'1" (2.92m x 2.17m)



BATHROOM

7'4" x 6'1" (2.26m x 1.87m)



EXTERNAL

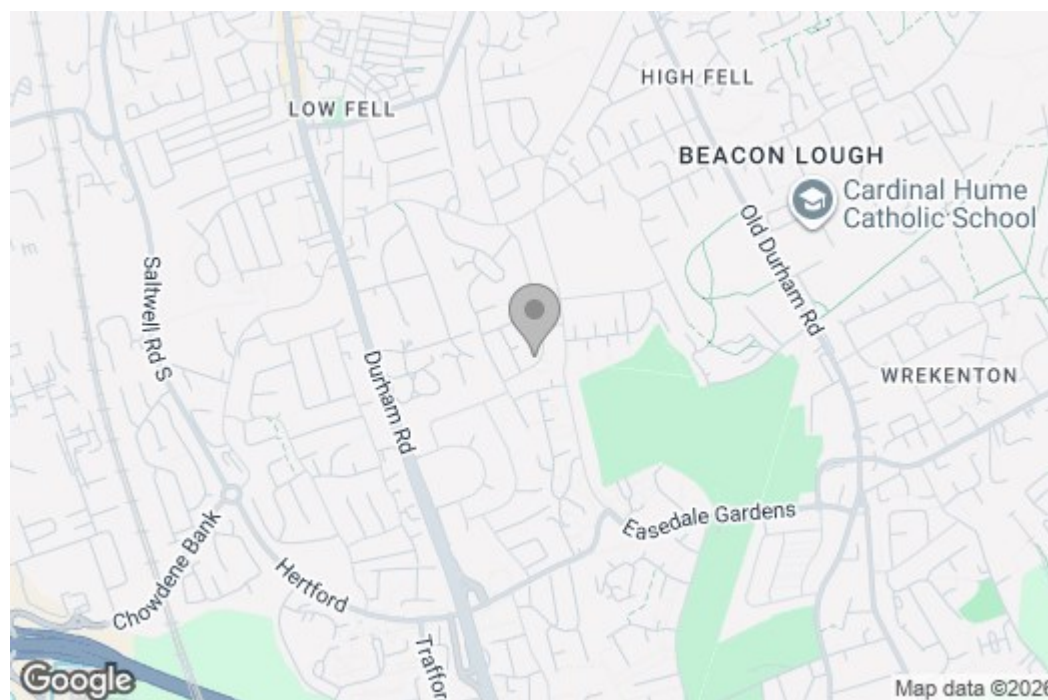
Property disclaimer

IMPORTANT NOTE TO PURCHASERS: We endeavour to make our sales particulars accurate and reliable, however, they do not constitute or form part of an offer or any contract and none is to be relied upon as statements of representation or fact. The services, systems and appliances listed in this specification have not been tested by us and no guarantee as to their operating ability or efficiency is given. All measurements have been taken as a guide to prospective buyers only, and are not precise. Floor plans where included are not to scale and accuracy is not guaranteed. If you require clarification or further information on any points, please contact us, especially if you are travelling some distance to view. Fixtures and fittings other than those mentioned are to be agreed with the seller. We cannot also confirm at this stage of marketing the tenure of this house.

Floor Plan



Area Map



These particulars, whilst believed to be accurate are set out as a general outline only for guidance and do not constitute any part of an offer or contract, purchaser should not rely on them as statements of representation of fact, but must satisfy themselves by inspection or otherwise as to their accuracy. No person in this firm's employment has the authority to make or give a representation or warranty in respect of the property.

Energy Efficiency Graph

