



43 Oakfield Road, Gateshead, NE11 0AA

Offers Over £170,000

Nestled on the charming Oakfield Road, this spacious extended semi-detached house presents a fantastic opportunity for families and individuals alike. Boasting two inviting reception rooms, this property offers ample space for relaxation and entertainment. The entrance porch leads into a welcoming hallway, which opens up to a lounge featuring a delightful fireplace and a bay window that fills the room with natural light. The dining room, also adorned with a fire surround and a bay window, overlooks the private rear garden, creating a perfect setting for family meals and gatherings. The well-appointed kitchen provides convenient access to the south-facing garden, making it ideal for those who enjoy outdoor living. On the first floor, you will find three generously sized double bedrooms, two of which come with built-in storage, ensuring plenty of space for your belongings. The bathroom includes a walk-in storage area, adding to the practicality of this lovely home. With great views from both the front and rear, this property is further enhanced by a double-width driveway that accommodates two vehicles, along with a garage featuring an electric roller shutter door. The private south-facing garden at the rear is a true gem, complete with a lawn and mature borders, perfect for enjoying sunny days. This home offers a blank canvas for your personal touch, making it an ideal choice for those looking to create their dream living space. Viewing is essential to fully appreciate the potential of this lovely family home in a desirable area. Don't miss out on this wonderful opportunity!

ENTRANCE PORCH



KITCHEN

9'8" x 8'10" (2.96m x 2.70m)



FIRST FLOOR LANDING



HALLWAY



BEDROOM ONE

12'10" x 9'0" (3.92m x 2.76m)



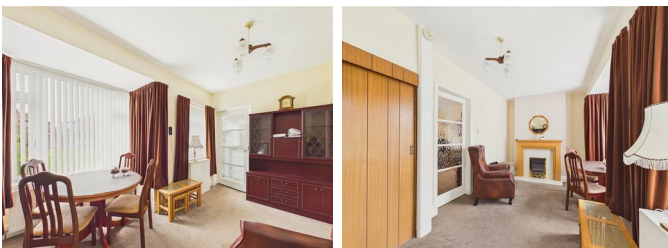
LOUNGE

15'3" into bay x 12'3" into alcoves (4.66m into bay x 3.75m into alcoves)



DINING/SITTING ROOM

15'4" into alcoves x 11'1" into window (4.69m into alcoves x 3.40m into window)



BEDROOM TWO

12'6" x 9'3" (3.83m x 2.82m)



BEDROOM THREE

10'8" x 8'5" (3.27m x 2.58m)



BATHROOM

9'3" x 5'6" (2.83m x 1.70m)



EXTERNAL



GARAGE

15'5" 9'1" (4.70m 2.79m)

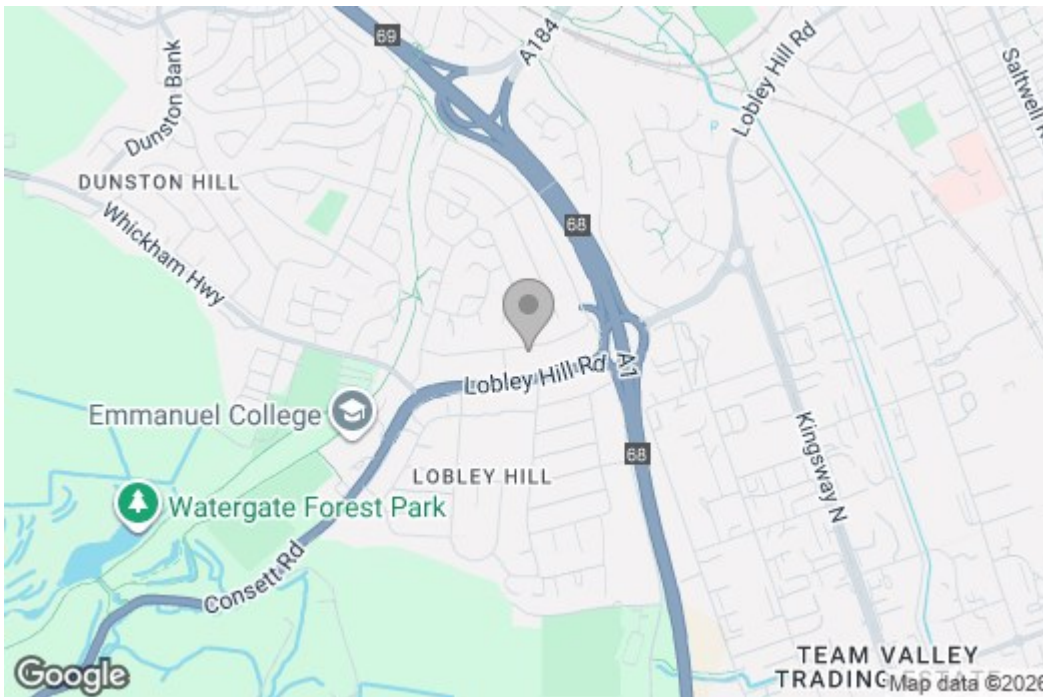
Property disclaimer

IMPORTANT NOTE TO PURCHASERS: We endeavour to make our sales particulars accurate and reliable, however, they do not constitute or form part of an offer or any contract and none is to be relied upon as statements of representation or fact. The services, systems and appliances listed in this specification have not been tested by us and no guarantee as to their operating ability or efficiency is given. All measurements have been taken as a guide to prospective buyers only, and are not precise. Floor plans where included are not to scale and accuracy is not guaranteed. If you require clarification or further information on any points, please contact us, especially if you are travelling some distance to view. Fixtures and fittings other than those mentioned are to be agreed with the seller. We cannot also confirm at this stage of marketing the tenure of this house.

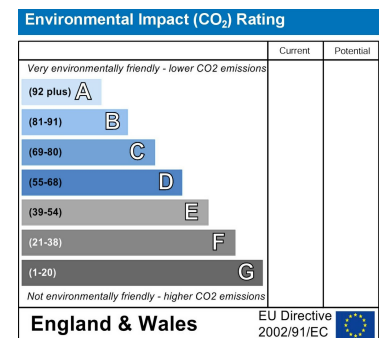
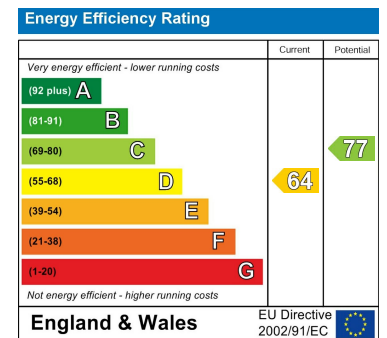
Floor Plan



Area Map



Energy Efficiency Graph



These particulars, whilst believed to be accurate are set out as a general outline only for guidance and do not constitute any part of an offer or contract, purchaser should not rely on them as statements of representation of fact, but must satisfy themselves by inspection or otherwise as to their accuracy. No person in this firm's employment has the authority to make or give an representation or warranty in respect of the property.