

29 Woodbine Street, Gateshead, NE8 1ST

£129,950

Located on the charming Woodbine Street in Gateshead, this spacious maisonette offers a delightful blend of comfort and character. With three well-proportioned bedrooms and a thoughtfully designed layout, this flat is perfect for families or those seeking a bit more space. As you enter, you are greeted by a welcoming hallway adorned with elegant wooden flooring, leading you to the first floor landing. The lounge and dining room is a standout feature, boasting a lovely fireplace that adds warmth and character to the space. This area is perfect for both relaxation and entertaining, providing a bright and airy atmosphere. The kitchen is equipped with an integrated oven and offers convenient access to a raised decked sun terrace, ideal for enjoying sunny afternoons or hosting gatherings with friends and family. The master bedroom is particularly inviting, featuring a stunning granite fire surround and a bay window that floods the room with natural light, creating a serene retreat. The family bathroom is well-appointed with a four-piece suite, ensuring comfort and convenience for all. Ascending to the second floor, you will find two additional double bedrooms, both benefiting from a Velux window that enhances the sense of space and light. Located in a popular central area, this property is close to local amenities, the award-winning Saltwell Park, and excellent transport links, making it a prime choice for those who value both convenience and leisure. Viewings are essential to truly appreciate the charm and character that this home provides. Don't miss the opportunity to make this delightful maisonette your own.

ENTRANCE HALLWAY



BEDROOM ONE

17'3" into bay x 11'5" (5.28m into bay x 3.49m)



BATHROOM

9'8" x 7'5" (2.97m x 2.27m)



FIRST FLOOR LANDING

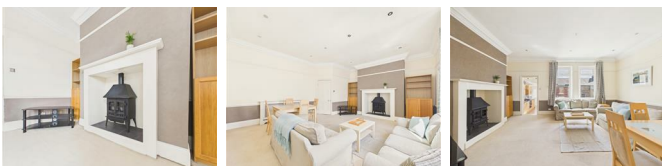


SECOND FLOOR LANDING



LOUNGE/DINING ROOM

19'0" into alcoves x 16'6" (5.80m into alcoves x 5.04m)



KITCHEN

14'2" x 7'4" (4.34m x 2.24m)



BEDROOM TWO

12'8" x 12'7" (3.87m x 3.84m)



BEDROOM THREE

14'6" x 8'9" (4.44m x 2.68m)



PRIVATE REAR YARD



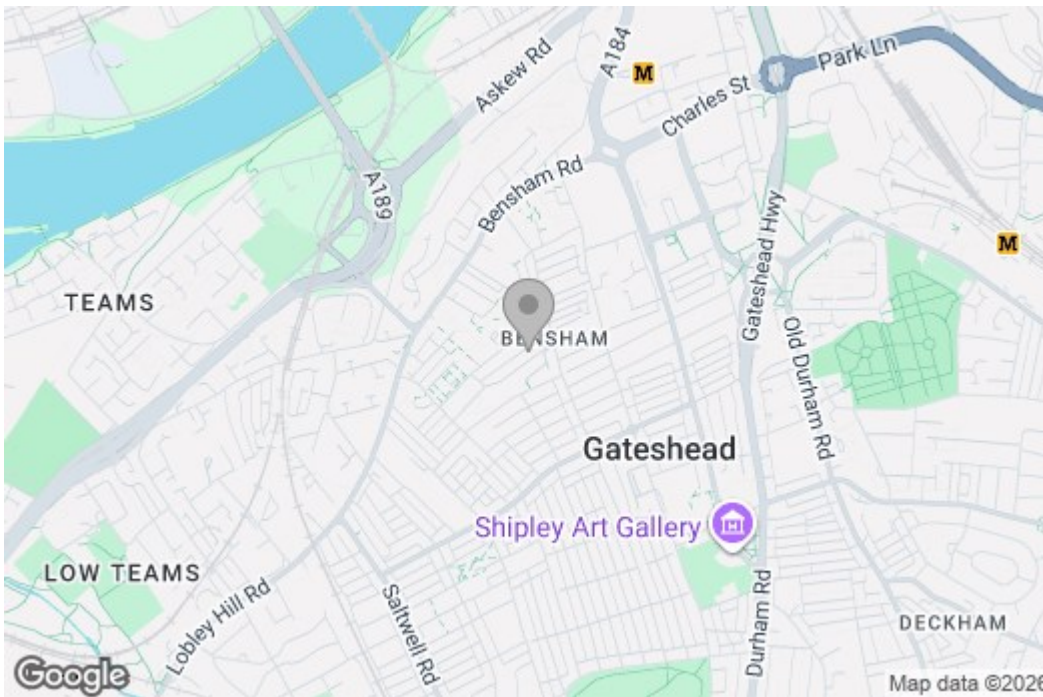
Property disclaimer

IMPORTANT NOTE TO PURCHASERS: We endeavour to make our sales particulars accurate and reliable, however, they do not constitute or form part of an offer or any contract and none is to be relied upon as statements of representation or fact. The services, systems and appliances listed in this specification have not been tested by us and no guarantee as to their operating ability or efficiency is given. All measurements have been taken as a guide to prospective buyers only, and are not precise. Floor plans where included are not to scale and accuracy is not guaranteed. If you require clarification or further information on any points, please contact us, especially if you are travelling some distance to view. Fixtures and fittings other than those mentioned are to be agreed with the seller. We cannot also confirm at this stage of marketing the tenure of this house.

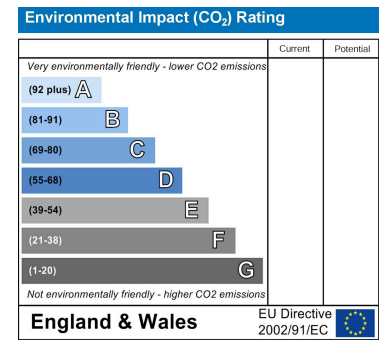
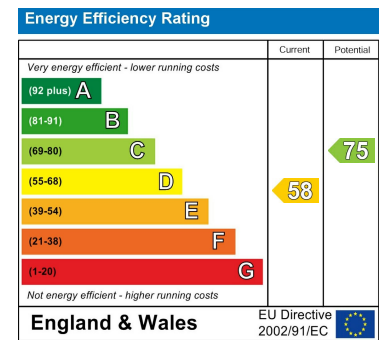
Floor Plan



Area Map



Energy Efficiency Graph



These particulars, whilst believed to be accurate are set out as a general outline only for guidance and do not constitute any part of an offer or contract, purchaser should not rely on them as statements of representation of fact, but must satisfy themselves by inspection or otherwise as to their accuracy. No person in this firm's employment has the authority to make or give a representation or warranty in respect of the property.