



5 North Dene Drive, Gateshead, NE9 5EH

Offers Over £275,000

Nestled in the exclusive development of North Dene Drive, this well-presented four-bedroom terraced house offers a perfect blend of modern living and comfort. Upon entering, you are greeted by a welcoming entrance hallway that leads to a convenient ground floor W.C. The heart of the home is the open-plan living, dining, and kitchen area, which is bathed in natural light and features elegant French doors that open directly onto the rear garden, creating an ideal space for entertaining or relaxing with family. The first floor boasts two spacious bedrooms, one of which is enhanced by fitted wardrobes, a family bathroom that can be accessed via the landing and bedroom one. Ascending to the second floor, you will find two additional bedrooms one with fitted wardrobes and both complemented by a well-appointed Jack and Jill shower room, perfect for family living or accommodating guests.

Externally, the property benefits from parking for two cars at the front, ensuring convenience for residents and visitors alike. The low-maintenance garden at the rear offers a tranquil outdoor space, ideal for enjoying the fresh air without the burden of extensive upkeep. This charming home is perfect for families or professionals seeking a stylish and practical living space in a desirable location. With its thoughtful design and modern amenities, this property is sure to impress. Don't miss the opportunity to make this delightful house your new home.

ENTRANCE HALLWAY



ACCOMMODATION FIRST FLOOR



GROUND FLOOR W.C



BEDROOM ONE

13'11" x 10'5" (4.25 x 3.20)



EN SUITE/ FAMILY BATHROOM



LOUNGE/ DINING /KITCHEN

26'10" x 15'8" (8.2 x 4.78)



BEDROOM FOUR

9'6" x 8'10" (2.92 x 2.70)



JACK & JILL SHOWER ROOM



EXTERNAL



ACCOMMODATION 2ND FLOOR



Property disclaimer

IMPORTANT NOTE TO PURCHASERS: We endeavour to make our sales particulars accurate and reliable, however, they do not constitute or form part of an offer or any contract and none is to be relied upon as statements of representation or fact. The services, systems and appliances listed in this specification have not been tested by us and no guarantee as to their operating ability or efficiency is given. All measurements have been taken as a guide to prospective buyers only, and are not precise. Floor plans where included are not to scale and accuracy is not guaranteed. If you require clarification or further information on any points, please contact us, especially if you are travelling some distance to view. Fixtures and fittings other than those mentioned are to be agreed with the seller. We cannot also confirm at this stage of marketing the tenure of this house.

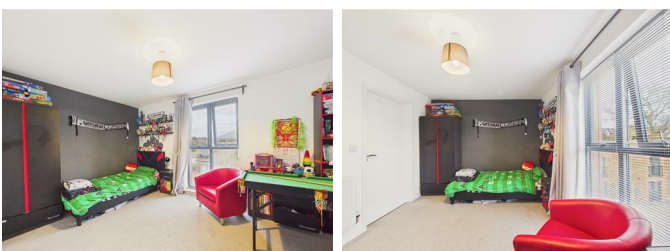
BEDROOM TWO

13'9" x 10'9" (4.21 x 3.30)



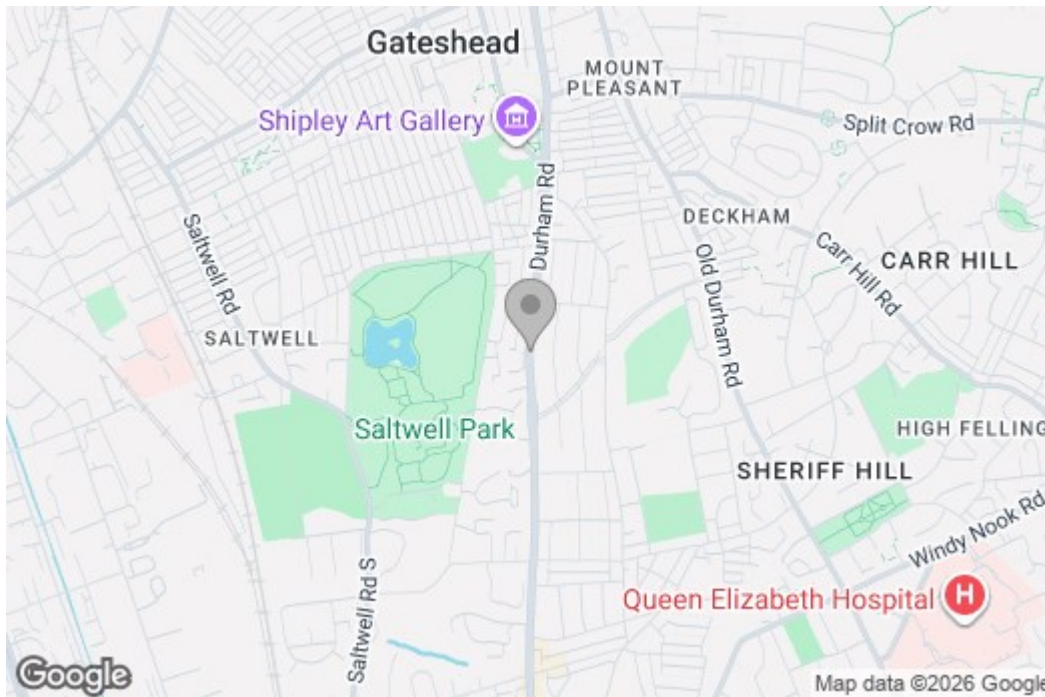
BEDROOM THREE

15'7" x 9'6" (4.75 x 2.92)

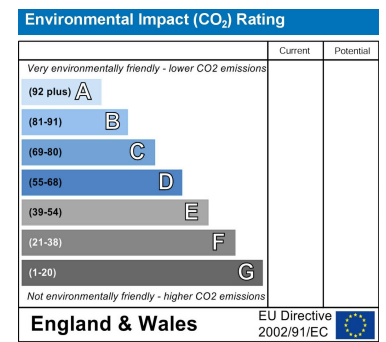
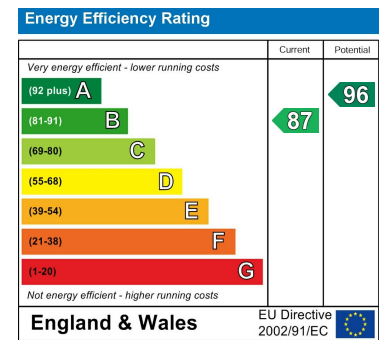


Floor Plan

Area Map



Energy Efficiency Graph



These particulars, whilst believed to be accurate are set out as a general outline only for guidance and do not constitute any part of an offer or contract, purchaser should not rely on them as statements of representation of fact, but must satisfy themselves by inspection or otherwise as to their accuracy. No person in this firm's employment has the authority to make or give an representation or warranty in respect of the property.