

## 3 Elmwood Gardens., Gateshead, NE11 0BX

£210,000

Nestled in the sought-after Elmwood Gardens, this charming semi-detached bungalow offers a perfect blend of comfort and style. With spacious accommodation throughout, this property is ideal for families or those seeking a peaceful retreat. Upon entering, you are greeted by a welcoming hallway featuring a stylish tiled floor, which leads to a partially boarded loft, providing additional storage space. The main bedroom boasts a lovely bay window, allowing natural light to flood the room, while two further bedrooms offer versatility, with one featuring fitted wardrobes for added convenience. The beautifully appointed four-piece bathroom is a highlight, providing a luxurious space to unwind. The lounge is a delightful area, enhanced by French doors that open onto a patio, seamlessly connecting indoor and outdoor living. The dining kitchen is a chef's dream, complete with a central island and elegant Quartz work surfaces and underfloor heating. It is equipped with modern appliances, including an integrated oven, eye-level microwave, induction hob, fridge/freezer, dishwasher, washing machine, and tumble dryer, making it perfect for both everyday living and entertaining. Outside, the property features a gated driveway that provides ample off-street parking, along with a paved pathway leading to the side and a well-maintained garden at the rear. This outdoor space is perfect for enjoying sunny days or hosting gatherings with family and friends. Viewing this exceptional bungalow is essential to fully appreciate the quality and charm it offers. Don't miss the opportunity to make this lovely home your own.

own.

## ENTRANCE HALLWAY



## BEDROOM ONE

14'2" x 10'8" (4.32m x 3.26m)



## BEDROOM TWO

11'9" x 8'7" to robes (3.60m x 2.64m to robes)



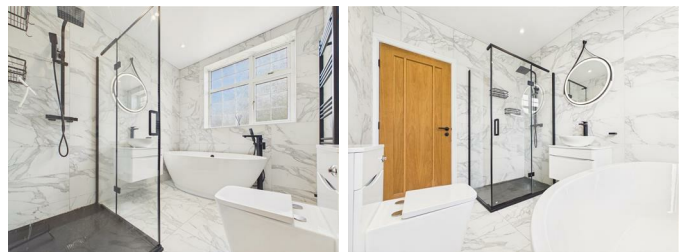
## BEDROOM THREE

8'11" x 8'7" (2.74m x 2.62m)



## BATHROOM

8'5" x 7'4" (2.59m x 2.24m)



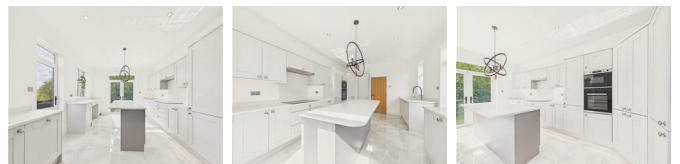
## LOUNGE

14'1" x 12'0" (4.31m x 3.66m)



## DINING KITCHEN

17'10" x 11'9" (5.44m x 3.60m)



## EXTERNAL



## GATED DRIVEWAY

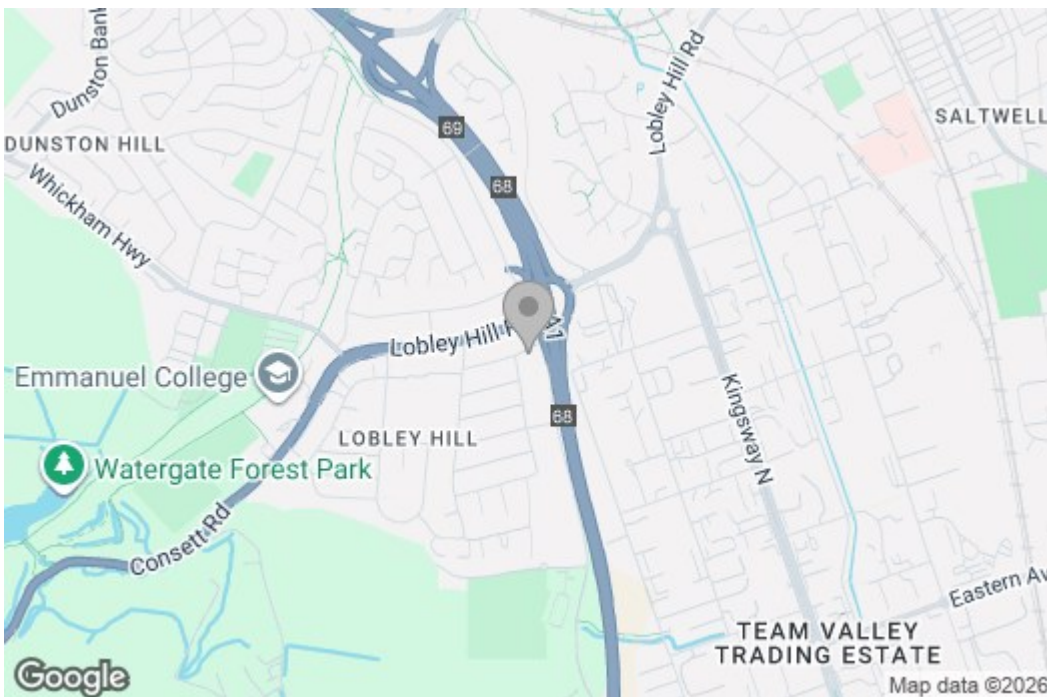


### **Property disclaimer**

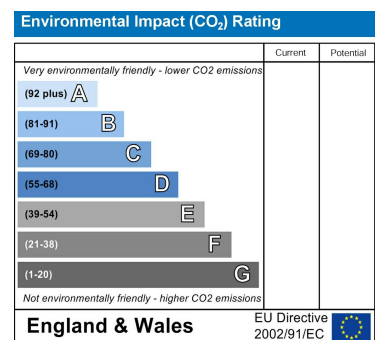
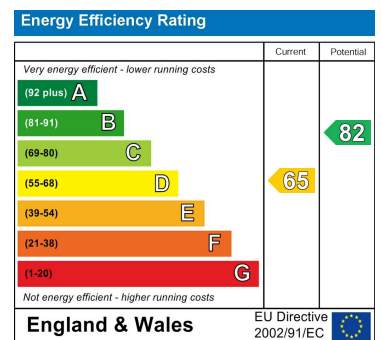
**IMPORTANT NOTE TO PURCHASERS:** We endeavour to make our sales particulars accurate and reliable, however, they do not constitute or form part of an offer or any contract and none is to be relied upon as statements of representation or fact. The services, systems and appliances listed in this specification have not been tested by us and no guarantee as to their operating ability or efficiency is given. All measurements have been taken as a guide to prospective buyers only, and are not precise. Floor plans where included are not to scale and accuracy is not guaranteed. If you require clarification or further information on any points, please contact us, especially if you are travelling some distance to view. Fixtures and fittings other than those mentioned are to be agreed with the seller. We cannot also confirm at this stage of marketing the tenure of this house.

# Floor Plan

## Area Map



## Energy Efficiency Graph



These particulars, whilst believed to be accurate are set out as a general outline only for guidance and do not constitute any part of an offer or contract, purchaser should not rely on them as statements of representation of fact, but must satisfy themselves by inspection or otherwise as to their accuracy. No person in this firm's employment has the authority to make or give an representation or warranty in respect of the property.