



## 21 Kenmore Close, Wardley, NE10 8WJ

£210,000

Nestled in the desirable area of Wardley, this immaculately presented townhouse on Kenmore Close offers a perfect blend of modern living and comfort. Spanning three well-designed floors, this property boasts spacious accommodation ideal for families. Upon entering, you are greeted by a welcoming hallway adorned with elegant ceramic floor tiles and a convenient built-in storage cupboard. The ground floor features a well-appointed w/c, ensuring practicality for everyday living. The heart of the home is the contemporary kitchen, recently re-fitted by the current owners. It comes equipped with an integrated oven, eye-level microwave, fridge/freezer, and washing machine, making it a delightful space for culinary enthusiasts. The lounge and dining room is a highlight of the property, featuring a stylish ceramic tiled floor, a media wall for entertainment, and French doors that open onto the rear patio, creating a seamless connection between indoor and outdoor spaces. On the first floor, you will find two beautifully presented double bedrooms, complemented by a stunning family bathroom that has been recently refurbished to a high standard. Ascending to the second floor, the main bedroom awaits, complete with a dressing room and a luxurious en-suite bathroom, providing a private retreat. The low-maintenance garden at the rear is perfect for outdoor relaxation, while the driveway to the front adds to the property's appeal. This gorgeous family home is a must-see, and viewing is essential to fully appreciate its charm and quality.

## ENTRANCE HALLWAY



## LOUNGE/DINING ROOM

17'0" x 12'11" (5.17 x 3.93)



## FIRST FLOOR LANDING

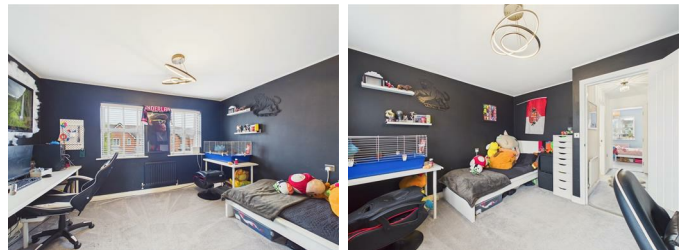


## GROUND FLOOR W/C



## BEDROOM TWO

12'11" x 11'6" (3.94 x 3.50)



## KITCHEN

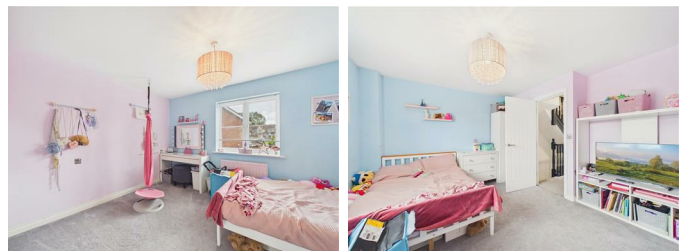
12'7" x 6'2" (3.84 x 1.87)



## BATHROOM

## BEDROOM THREE

12'10" x 11'0" (3.91 x 3.35)



## SECOND FLOOR LANDING

## BEDROOM ONE

12'11" x 12'9" (3.94 x 3.89)

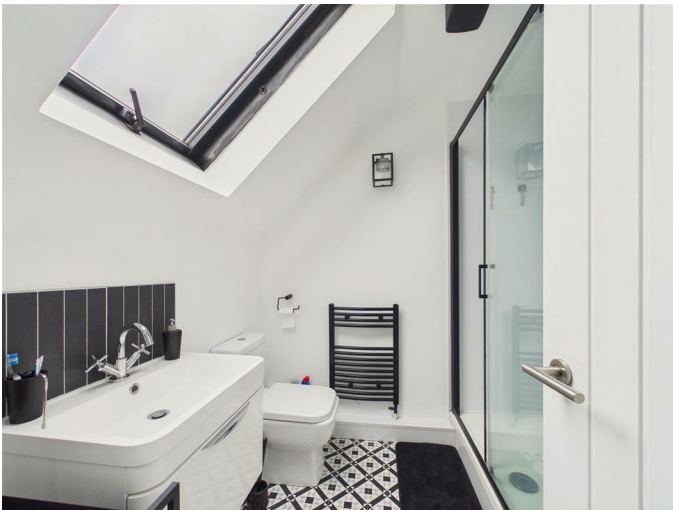


## DRESSING ROOM

10'5" x 6'4" (3.18 x 1.93)



## EN-SUITE



## EXTERNAL

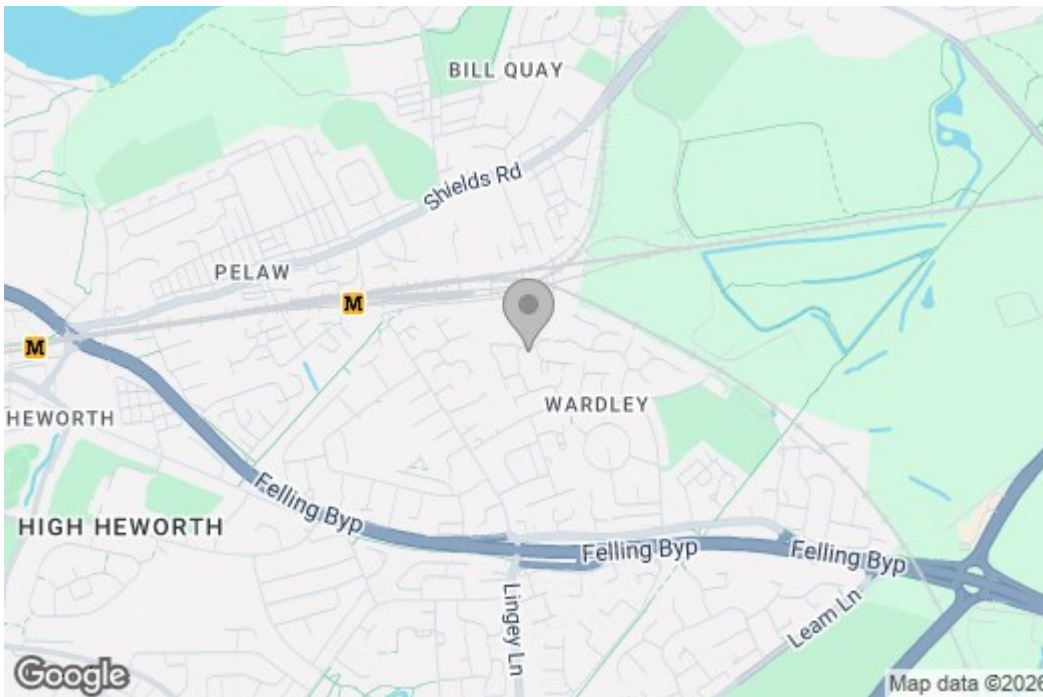


### Property disclaimer

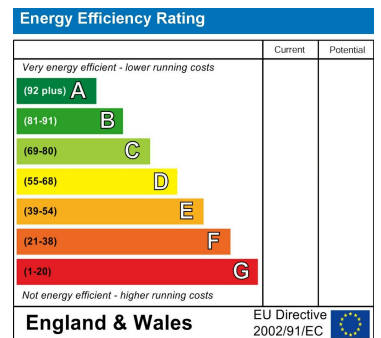
**IMPORTANT NOTE TO PURCHASERS:** We endeavour to make our sales particulars accurate and reliable, however, they do not constitute or form part of an offer or any contract and none is to be relied upon as statements of representation or fact. The services, systems and appliances listed in this specification have not been tested by us and no guarantee as to their operating ability or efficiency is given. All measurements have been taken as a guide to prospective buyers only, and are not precise. Floor plans where included are not to scale and accuracy is not guaranteed. If you require clarification or further information on any points, please contact us, especially if you are travelling some distance to view. Fixtures and fittings other than those mentioned are to be agreed with the seller. We cannot also confirm at this stage of marketing the tenure of this house.

# Floor Plan

## Area Map



## Energy Efficiency Graph



These particulars, whilst believed to be accurate are set out as a general outline only for guidance and do not constitute any part of an offer or contract, purchaser should not rely on them as statements of representation of fact, but must satisfy themselves by inspection or otherwise as to their accuracy. No person in this firm's employment has the authority to make or give an representation or warranty in respect of the property.